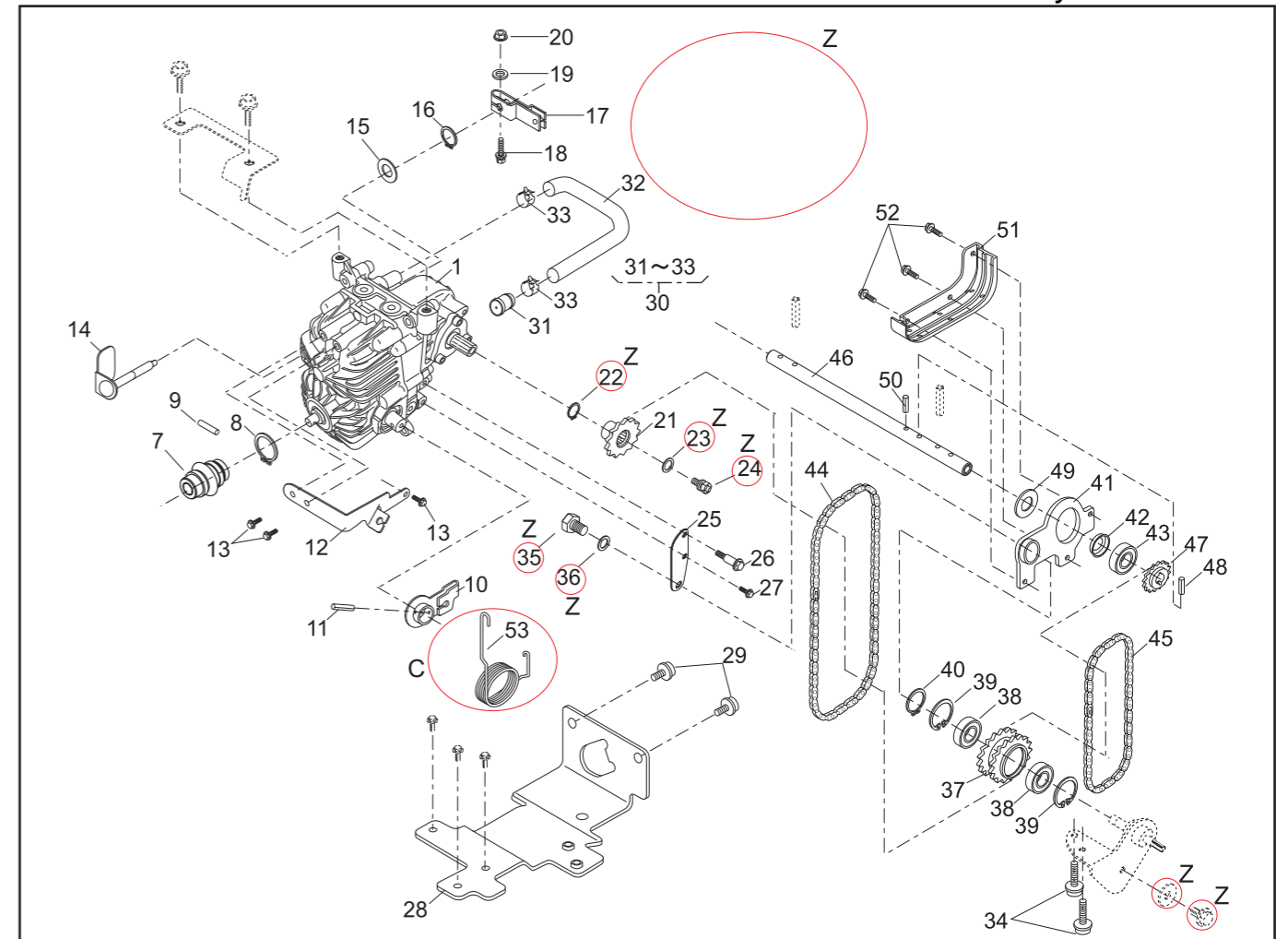


**PARTS LIST
HST UNIT**

P/L No. 46014-339-02

NOTE	REF. No.	PARTS No.	PARTS NAME	HST		1/2	Dec. 25, 2006	REMARKS
				Q'TY INCLUDING	PRICE()			
	1	71900 979	HST ASS'Y	1				
	7	91097 101	UNIVERSAL JOINT	1				
	8	812V 2000	C-SNAP RING	1				
	9	717B 0418	PARALLEL PIN	1				
	10	51042 126	LEVER C.P.	1				
	11	711V 0432	SPRING PIN	1				
	12	51002 121	WIRE HOLDER	1				
	13	335L 0612	FLANGE BOLT	3				
	14	71203 139	ARM C.P.	1				
	15	68036 280	WASHER	1				
	16	812V 1000	C-SNAP RING	1				
	17	11104 119	ARM	1				
	18	320L 0525	(+)HEXAGON BOLT	1				
	19	611L 0500	PLAIN WASHER	1				
	20	571L 0500	FLANGE NUT	1				
	21	36112 142	SPROCKET	1				
	22	812V 1500	C-SNAP RING	1				
	23	68036 125	WASHER	1				
	24	312L 0612	HEXAGON BOLT	1				
	25	11113 414	STAY	1				
	26	31062 109	PRE-COAT LOCK BOLT	1				
	27	335L 0612	FLANGE BOLT	1				
	28	11137 131	BASE C.P.	1				



**PARTS LIST
HST UNIT**

P/L No. 46014-339-02

NOTE	REF. No.	PARTS No.	PARTS NAME	HST		2/2	Dec. 25, 2006	REMARKS
				Q'TY INCLUDING	PRICE()			
	29	423U 0816	SOCKET SCREW FLANGE	2				
	30	71900 980	AIR BREATHER ASS'Y	1				
	31	91096 103	BREATHER	1				
	32	36082 125	TUBE	1				
	33	68031 144	HOSE BAND	2				
	34	423U 0820	SOCKET SCREW FLANGE	2				
	35	311K 0812	HEXAGON BOLT	1				
	36	661L 0800	SPRING LOCK WASHER	1				
	37	36112 143	SPROCKET	1				
	38	916B 6002	BEARING	2				
	39	811V 3200	C-SNAP RING	2				
	40	812V 1500	C-SNAP RING	1				
	41	11115 124	TENSION ARM	1				
	42	11102 228	HOLDER	1				
	43	916B 6202	BEARING	1				
	44	91074 133	CHAIN	1				
	45	91074 134	CHAIN	1				
	46	64014 366	SHAFT	1				
	47	36112 144	SPROCKET	1				
	48	31034 137	PIN	1				
	49	68036 275	WASHER	1				
	50	711V 0522	SPRING PIN	1				
	51	36068 200	GUARD	1				
	52	318L 0612	(+)HEXAGON BOLT	3				
C	53	68013 390	SPRING	1				