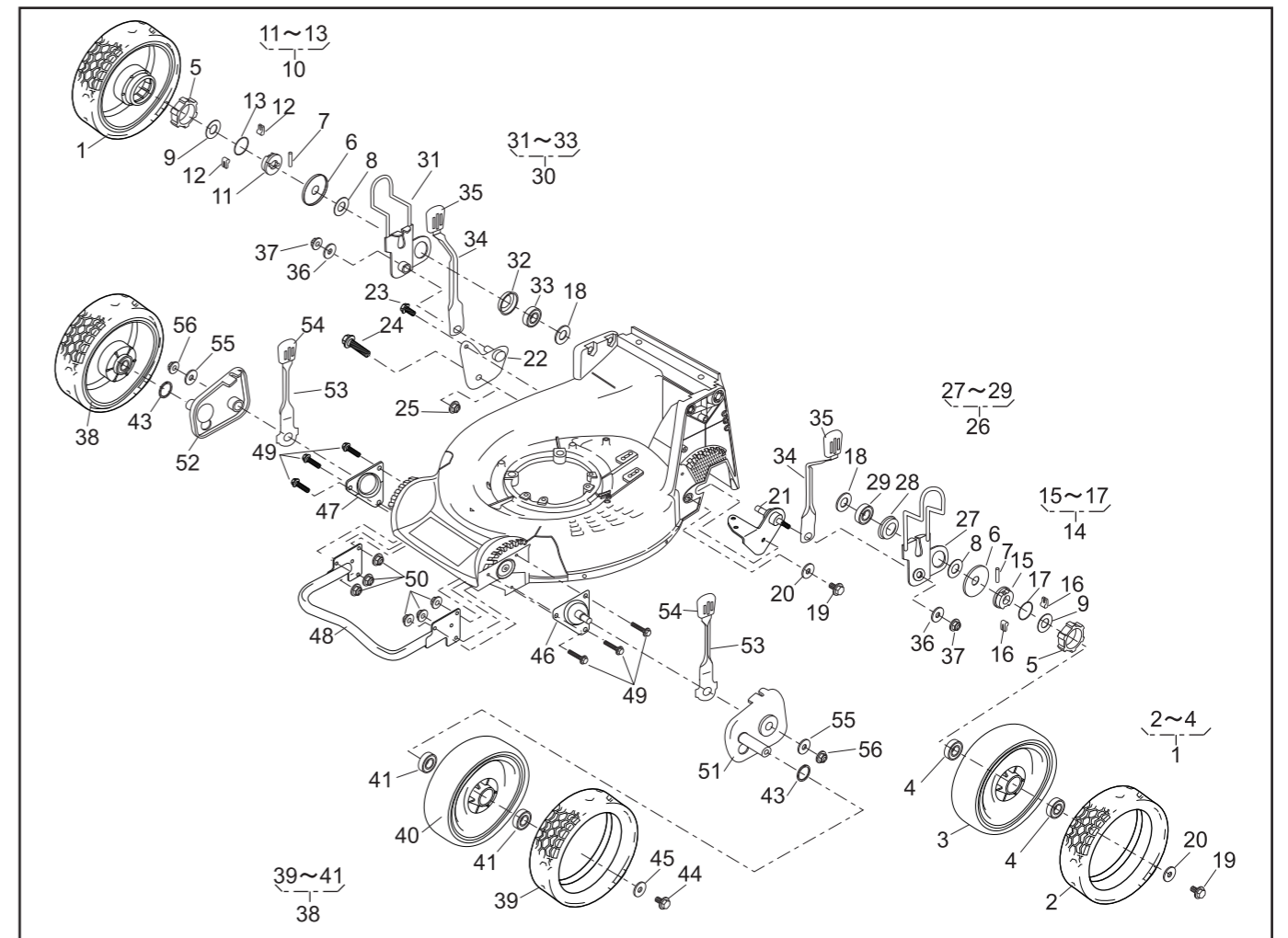


PARTS LIST

46014-345-00

REF. No.	PARTS No.	PARTS NAME	9.6"AI-WHEEL-HST-Pro		PRICE()	1/2		REMARKS
			Q'TY INCLUDING			RECOMM.(%) Lot.100		
1	71041 144	WHEEL ASS'Y(9.6"A.W.)	2					
2	91086 116	TIRE	2					
3		WHEEL	2					
4	916B 6002	BEARING	4					
5	11086 119	STOPPER	2					
6	61003 112	THRUST PLATE	2					
7	31034 137	PIN	2					
8	68036 270	WASHER	2					
9	68036 146	WASHER	2					
10	71158 101	RATCHET ASS'Y(R)	1					
11	11102 138	HOLDER	1					
12	31034 170	PIN	2					
13	68013 266	SPRING	1					
14	71158 102	RATCHET ASS'Y(L)	1					
15	11102 138	HOLDER	1					
16	31034 170	PIN	2					
17	68013 266	SPRING	1					
18	68036 275	WASHER	2					
19	31057 181	HEXAGON BOLT	3					
20	68036 101	WASHER	3					
21	11006 162	STAY C.P.(HST)	1					
22	11006 152	STAY C.P.(RR)	1					
23	342L 0612	FLANGE TAPPING BOLT	1					
24	31057 255	HEXAGON BOLT	1					
25	569L 0800	FLANGE NYLON NUT	1					
26	71122 110	ADJUSTER ASS'Y(L)	1					
27	11142 125	ADJUSTER(RL)	1					
28	11102 228	HOLDER	1					



PARTS LIST

46014-345-00

REF. No.	PARTS No.	PARTS NAME	9.6"AI-WHEEL-HST-Pro		PRICE()	2/2		REMARKS
			Q'TY INCLUDING			RECOMM.(%) Lot.100		
29	916B 6202	BEARING	1					
30	71122 111	ADJUSTER ASS'Y(R)	1					
31	11142 126	ADJUSTER(RR)	1					
32	11102 228	HOLDER	1					
33	916B 6202	BEARING	1					
34	11150 105 09	ADJUST LEVER	2					
35	36061 121	KNOB	2					
36	613L 0800	PLAIN WASHER	2					
37	569L 0800	FLANGE NYLON NUT	2					
38	71041 145	WHEEL ASS'Y(9.6"A.W.)	2					
39	91086 116	TIRE	2					
40		WHEEL	2					
41	916B 6002	BEARING	4					
42								
43	51113 119	RING	2					
44	31057 181	HEXAGON BOLT	2					
45	68036 101	WASHER	2					
46	11006 153	STAY C.P.(FL)	1					
47	11006 154	STAY C.P.(FR)	1					
48	11153 112	BUMPER	1					
49	335L 0625	FLANGE BOLT	6					
50	569L 0600	FLANGE NYLON NUT	6					
51	11142 127	ADJUSTER(FL)	1					
52	11142 128	ADJUSTER(FR)	1					
53	11150 109 09	ADJUST LEVER	2					
54	36061 121	KNOB	2					
55	613L 0800	PLAIN WASHER	2					
56	569L 0800	FLANGE NYLON NUT	2					